

How to install SAMBA on Ubuntu 22.04 LTS Jammy Linux

Last Updated on: September 12, 2022 by Heyan Maurya

Source de ce document :

<https://www.how2shout.com/linux/how-to-install-samba-on-ubuntu-22-04-lts-jammy-linux/>

Install and configure SAMBA server on Ubuntu 22.04 LTS Jammy JellyFish Linux to share files and folders with Windows 7/10/11 and Linux systems.

Samba is a free & open-source implementation of SMB protocol for integrating servers and desktops running Linux or Unix in environments with Microsoft's Active Directory directory service. The software can be used as a controller for the domain or as a normal member.

Using SAMBA software the users can easily access the files, printers, and other shared resources on a company network or intranet, among other things. And the best thing in almost all Linux distributions, SAMBA is present in their repositories to install easily.

Samba uses the frequently used client/server protocols SMB (Server Message Block) or nowadays CIFS (Common Internet File System). The latter is an open variant of SMB. If applications are compatible with SMB or CIFS, they can communicate with the Samba Server.

Samba's SMB/CIFS client is called smbclient. Some desktop variants of Linux have the Samba Client pre-installed whereas others need to install manually. The source code can be found under samba.org.

Contents [hide](#)

[Steps to install SAMBA on Ubuntu 22.04 LTS](#)

[1. Run system update](#)

[2. Install Samba on Ubuntu 22.04](#)

[3. Allow samba in Ubuntu 22.04 Firewall](#)

[4. Add your user to the Samba group](#)

[5. Share some Ubuntu folder](#)

[6. Access the shared folder](#)

[#On Debian, Ubuntu, CentOS, and other Linux with Gnome](#)

[#On Windows 11 or 10](#)

Steps to install SAMBA on Ubuntu 22.04 LTS

1. Run system update

Well, it is not a necessary step, however, run the system update command to rebuild the repo cache and make sure all the system installed packages are up to date.

```
sudo apt update
```

2. Install Samba on Ubuntu 22.04

Next, in your command terminal use the APT package manager to install Samba on your Ubuntu 22.04 LTS. The packages to set it up are already there in the system repository, thus we don't need to add anything extra.

```
sudo apt install samba
```

Check its service is active and running:

```
systemctl status smbd --no-pager -l
```

```
h2s@h2s-virtual-machine:~$ systemctl status smbd --no-pager -l
● smbd.service - Samba SMB Daemon
   Loaded: loaded (/lib/systemd/system/smbd.service; enabled; vendor preset: enabled)
   Active: active (running) since Wed 2022-07-06 13:14:10 IST; 2h 20min ago
     Docs: man:smbd(8)
           man:samba(7)
           man:smb.conf(5)
  Process: 50870 ExecStartPre=/usr/share/samba/update-apparmor-samba-profile (code=exited, status=0/SUCCESS)
 Main PID: 50879 (smbd)
    Status: "smbd: ready to serve connections..."
     Tasks: 4 (limit: 4588)
    Memory: 16.1M
       CPU: 386ms
    CGroup: /system.slice/smbd.service
            └─50879 /usr/sbin/smbd --foreground --no-process-group
              └─50881 /usr/sbin/smbd --foreground --no-process-group
                └─50882 /usr/sbin/smbd --foreground --no-process-group
                  └─50883 /usr/lib/x86_64-linux-gnu/samba/samba-bgqd --ready-signal-fd=45 --parent-watch-fd=11 --debuglevel=0 -F
```

To make the service enabled to start automatically with system boot, here is the command:

```
sudo systemctl enable --now smbd
```

3. Allow samba in Ubuntu 22.04 Firewall

To connect and access the shared files over SMB protocol, we have to first whitelist and allow its service in the firewall to get accessed from the outside of the computer. Here is the command to follow.

```
sudo ufw allow samba
```

4. Add your user to the Samba group

Let's add the current System user to the SambaShare group, so it can access all files and folders shared under it.

```
sudo usermod -aG sambashare $USER
```

set the password for share: This will be different from your system password.

```
sudo smbpasswd -a $USER
```

Note: *\$USER* means your current user, if you want to set some other user then change *\$USER* with the particular user name. Also, the file or folder you want to share must be accessible to that particular user.

Alternatively, if you want to add some other users to the SAMBA group use:

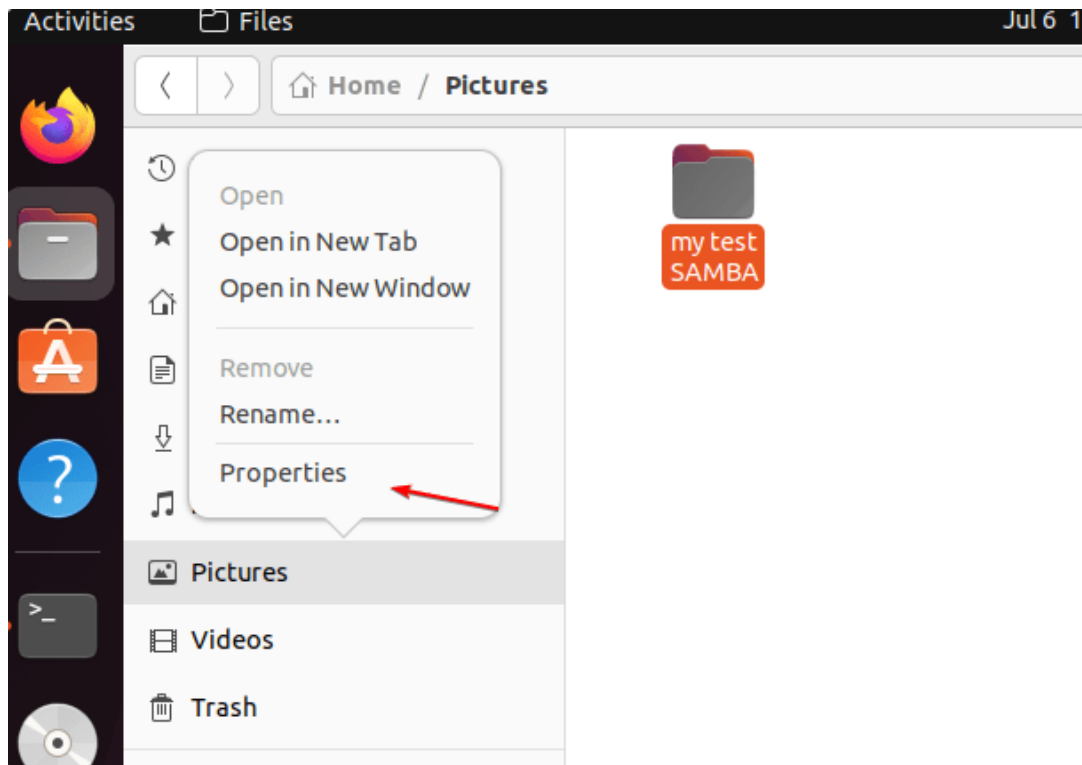
```
sudo usermod -aG sambashare your-user
```

To set a password:

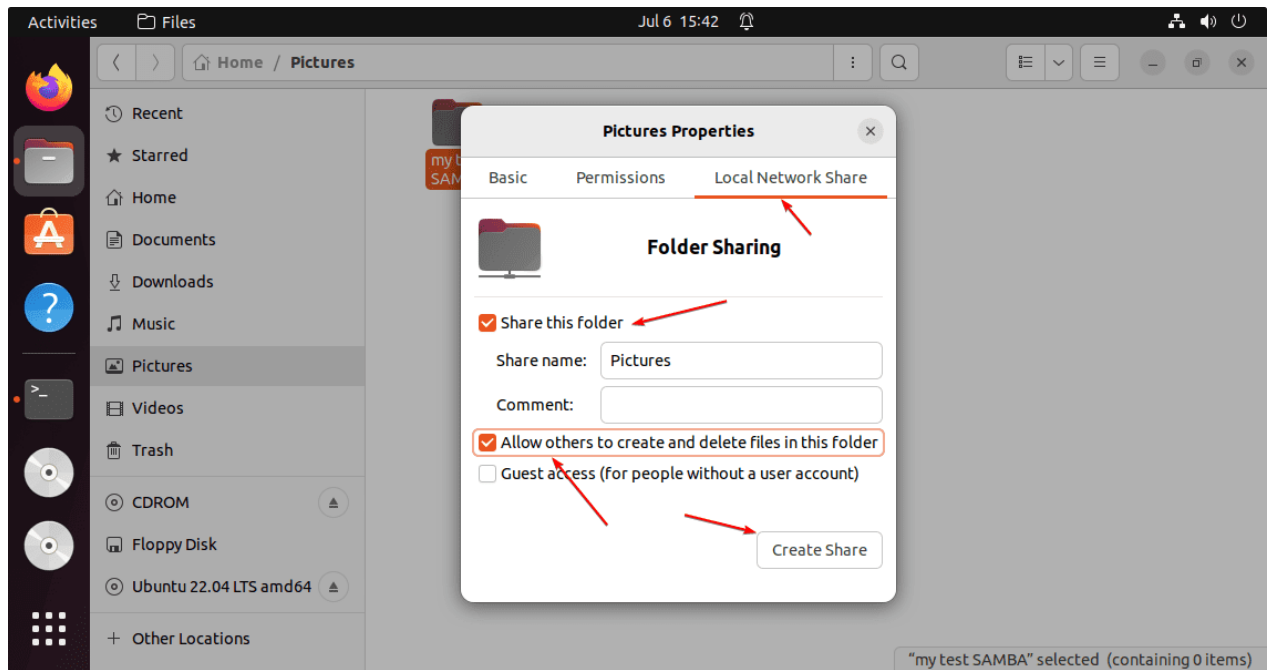
```
sudo smbpasswd -a your-user
```

5. Share some Ubuntu folder

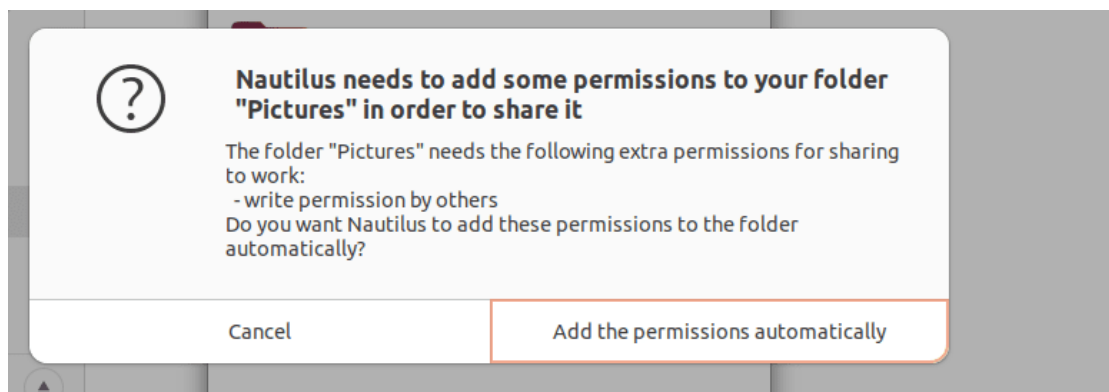
We have configured the user to use Samba, let's test it. Let's say you want to share the **Pictures** folder or any other that is owned by your current user.



Once you have decided which folder you want to share over the network, then **right-click** on it and select **Properties** and then the **Local Network Share** tab. If you want the users to create or delete the files from the shared directory then check the box given for “**Allow others to create and delete files in this folder**“. Whereas, if you want any user to log in and access the shared folder then select the “**Guest access**” box otherwise don't. Finally, to create the sharing point, click on the “**Create Share**” button.



When Ubuntu's Nautilus file manager asks to add some permission to the folder to share- Click on the: **“Add the permissions automatically”**.



6. Access the shared folder

Here we are using Debian and Windows 11 to access the remotely shared folder on Ubuntu 22.04. You can use macOS if you want.

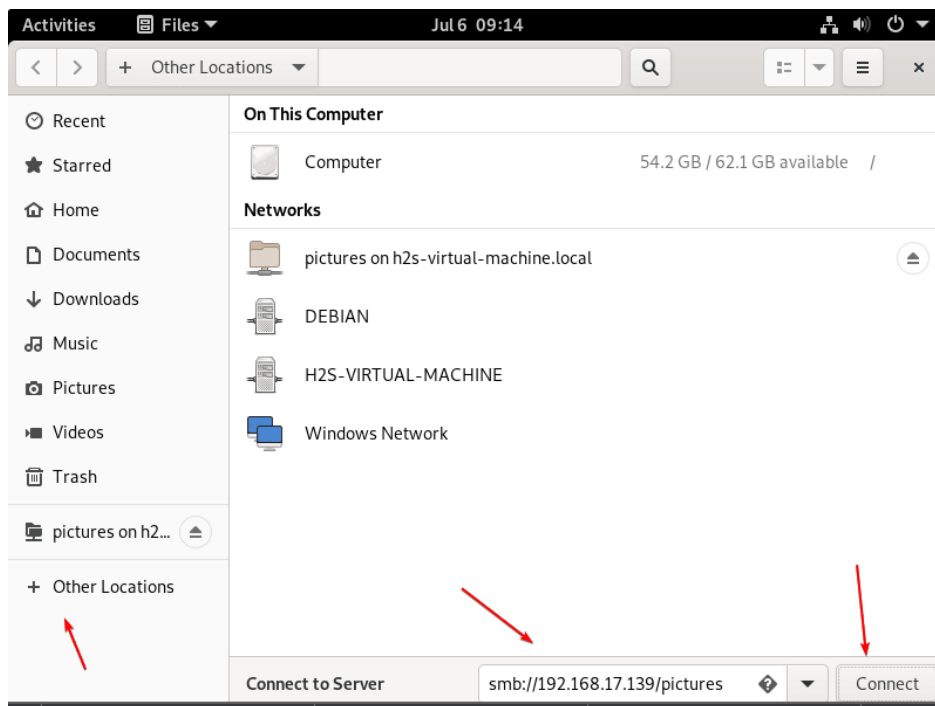
#On Debian, Ubuntu, CentOS, and other Linux with Gnome

⇒ Go to **File Manager** and then click on the **Other locations**.

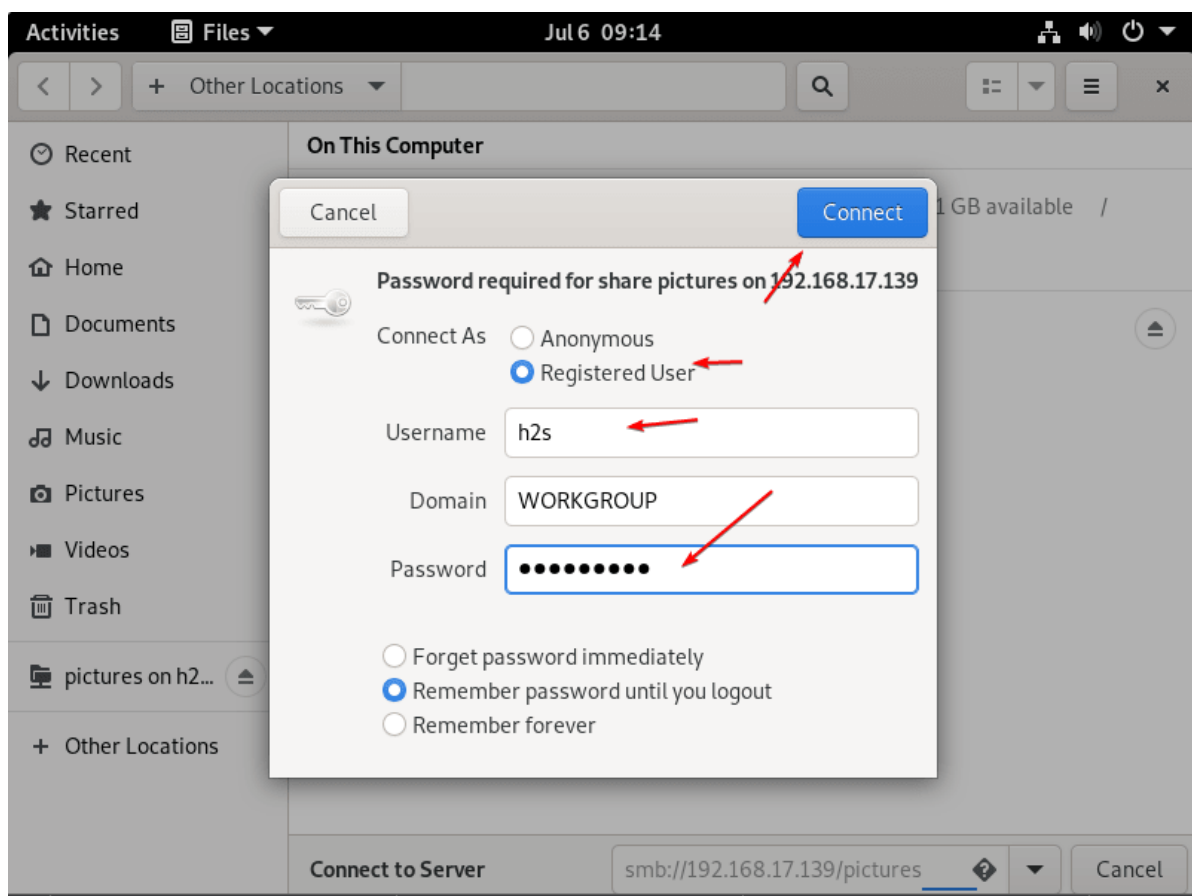
⇒ There go to Connect Server box and type your Ubuntu 22.04 Samba IP address in the following format:

```
smb://ip-address/shared-folder-name
```

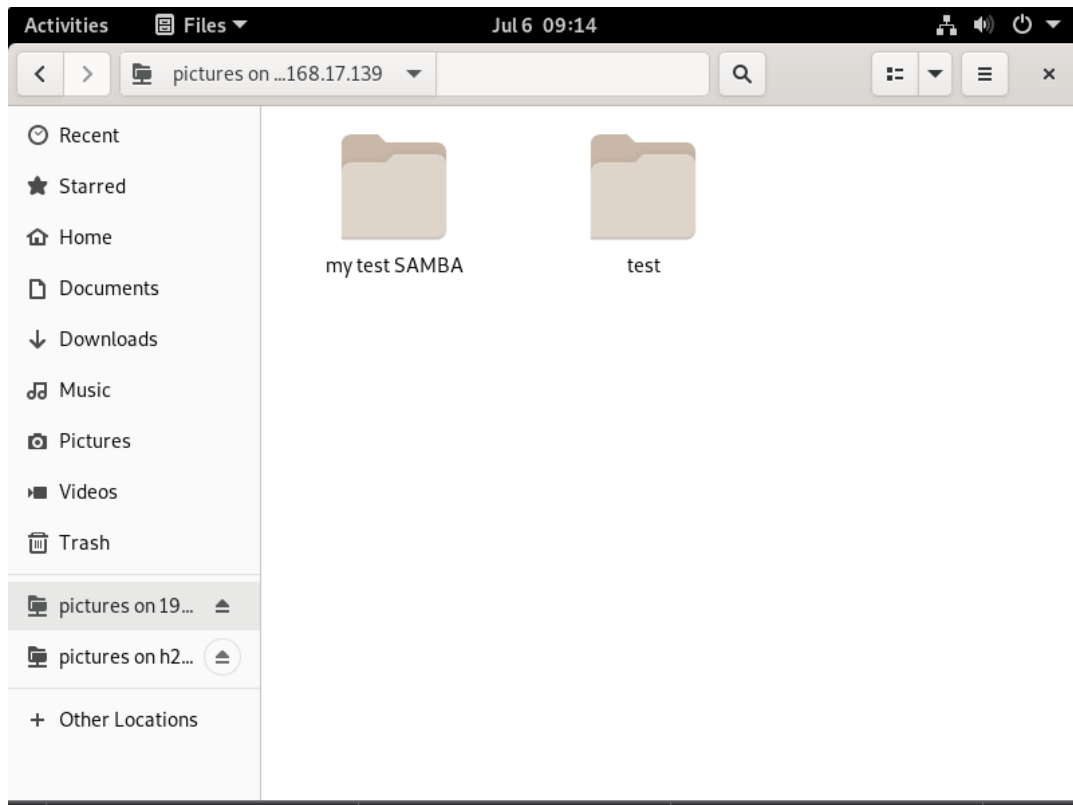
In the above URL format: replace **ip-address** with your SAMBA server IP and **Shared-folder-name** with a folder that you have shared.



⇒ When the system asks for credentials, then select “Registered User” and give your Ubuntu system user and password set to use for SAMBA.



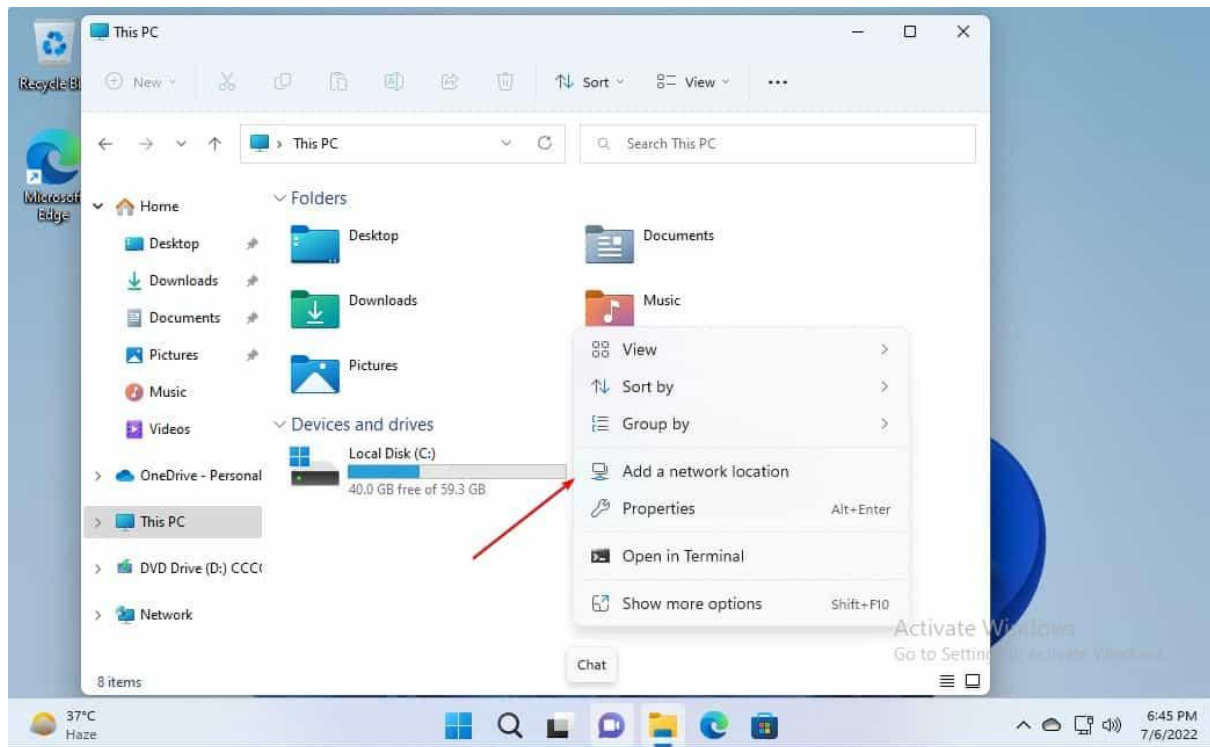
⇒ Soon, you will have the content of your remote Ubuntu server via SMB protocol.



#On Windows 11 or 10

If you are using the Windows system and want to mount the folder shared on Ubuntu 22.04 with the help of SAMBA, then here are the steps to follow.

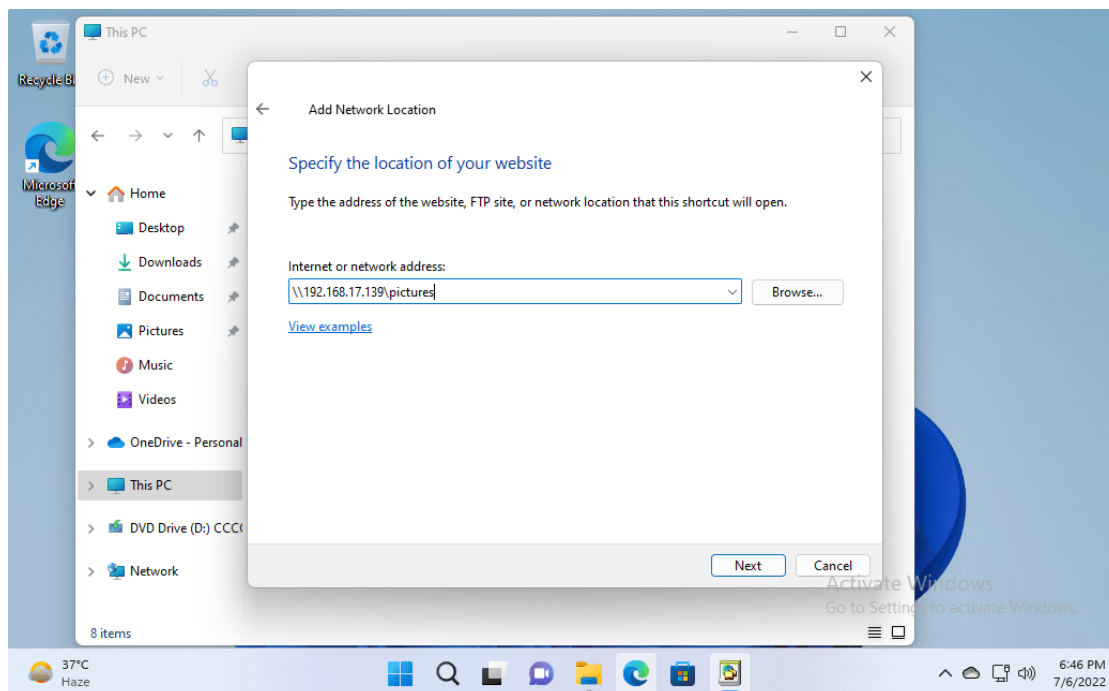
⇒ Go to **This PC** and right-click somewhere on the blank area to select “**Add a network location**” from the context menu.



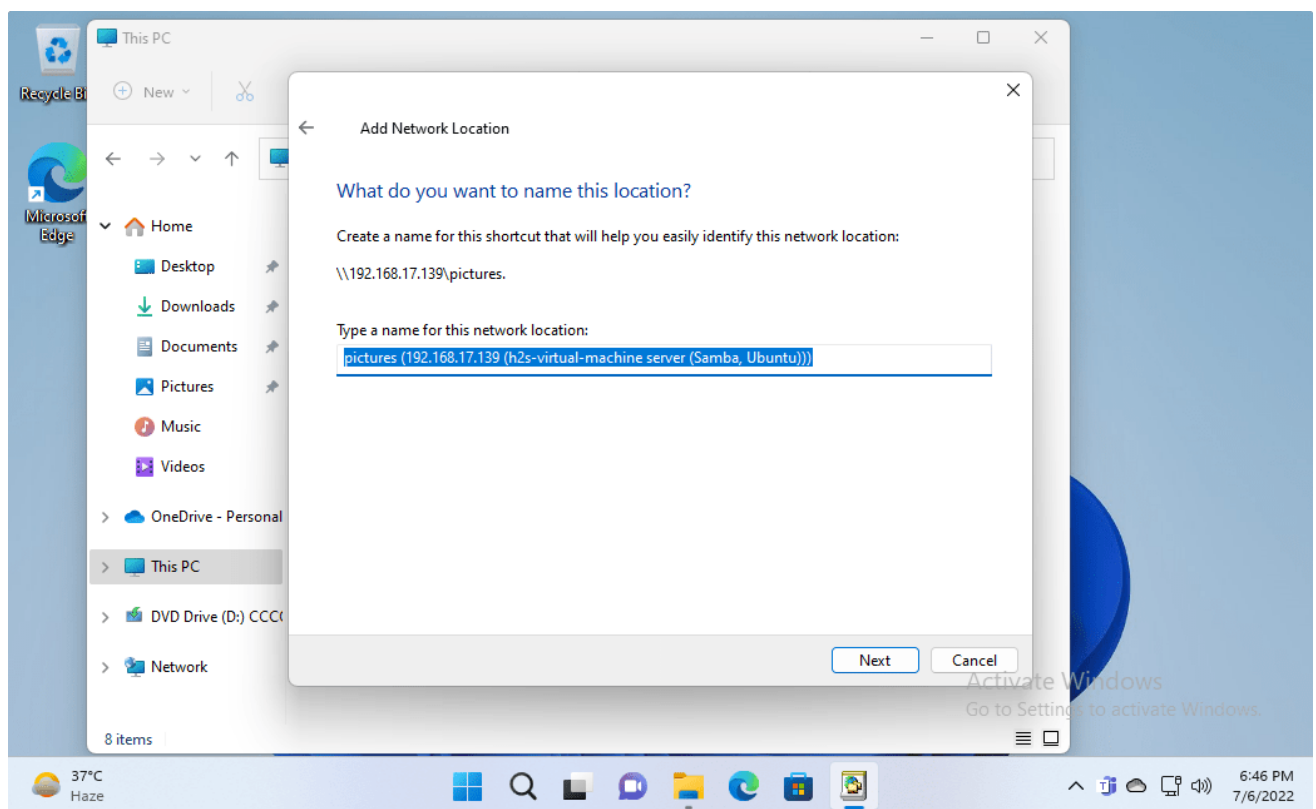
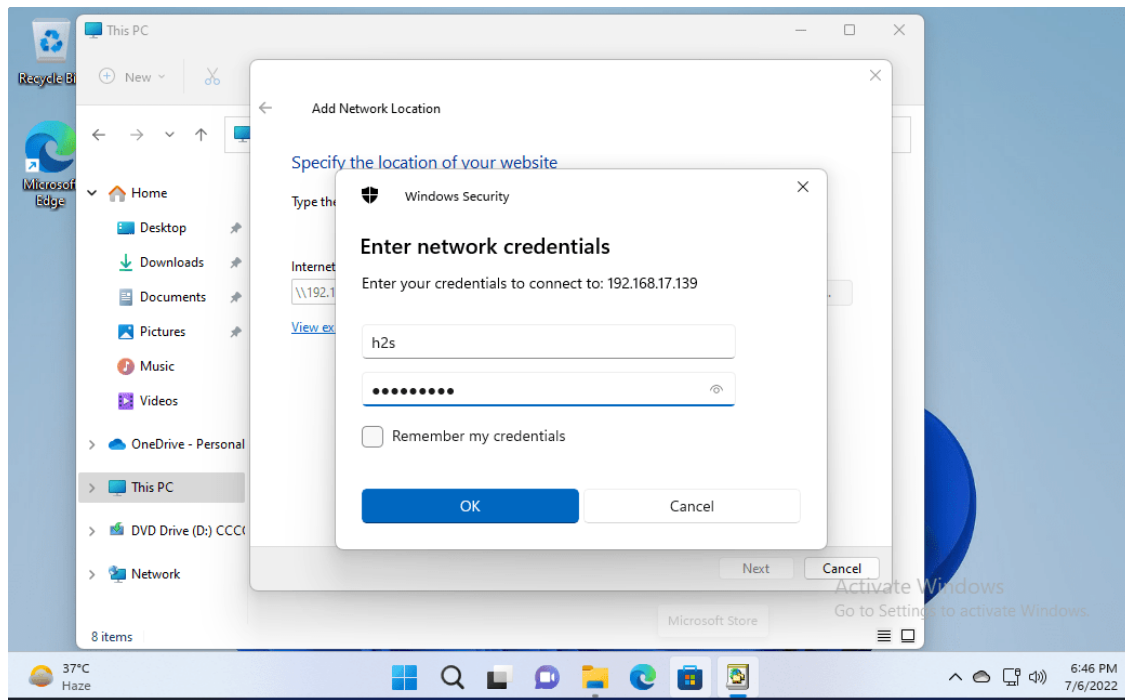
⇒ Now, enter the Ip-address and shared folder name in the following format:

`\\server-ip-address\shared-folder`

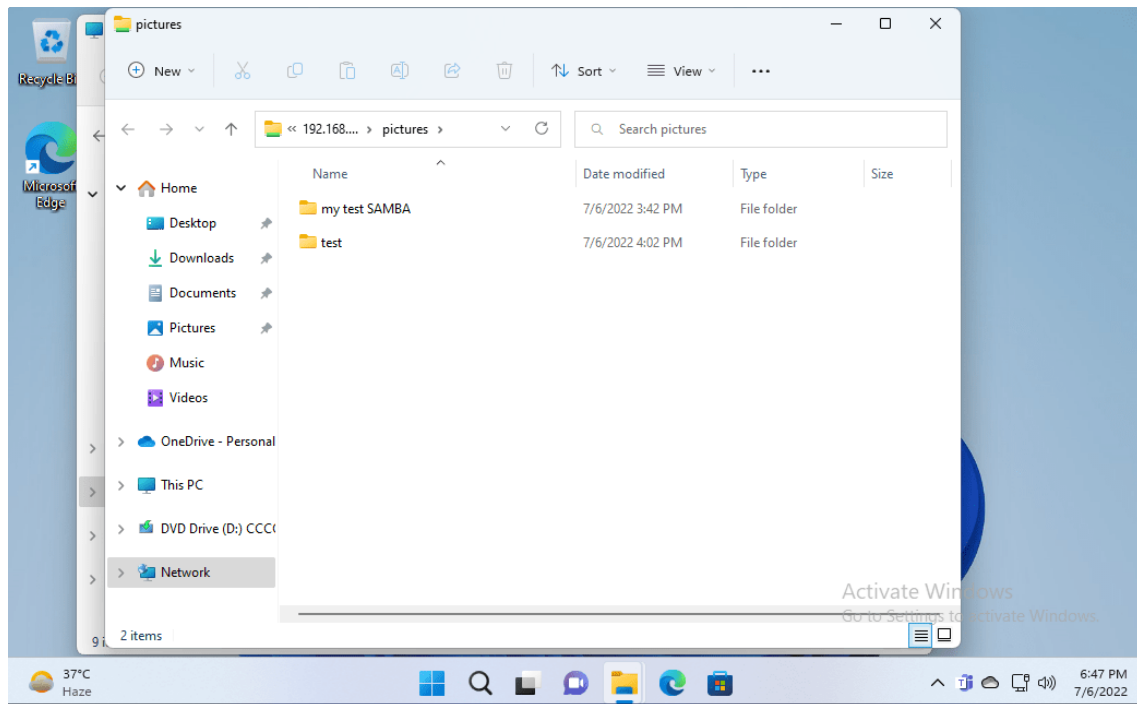
Replace **server-ip-address** with your Ubuntu's IP where you have configured the SAMBA, along with the shared folder name.



⇒ Soon, the system will ask you to enter the Username and password used to access the SAMBA share folders. Enter that and hit the **OK** button.



⇒ Finally, you have the remotely or locally Ubuntu's shared folder mounted on your Windows 10 or 11 via SMB protocol.



Other Articles:

[Install Samba on Linux Mint to share files with Windows](#)

[How to Change file, folder, or app Icons in Gnome Linux](#)

[Install XAMPP on Ubuntu 22.04 LTS](#)

[4 Ways to install GIMP on Ubuntu 22.04...](#)

Categories [Linux](#), [Ubuntu](#) Tags [Ubuntu 22.04](#)

[Install OBS Studio on Ubuntu 22.04 LTS Jammy Linux](#)

[Install Metasploit Framework on Ubuntu 22.04 LTS Jammy](#)